



This project has received funding from the European Union's Horizon Europe research and innovation programme under grant agreement No. 101136899.

# SERIGO: Social Economy for Resilience, Inclusion and Good life in Rural areas

**Marika Gruber**

24 January 2024

# Personal background

---

- Educational background:
  - **Public Management:** economics, politics, law, public sector innovation
  - **Intervention research:** applied philosophy, transdisciplinary and participatory research, collective selfenlightenment
  
- **Migration researcher** with a strong focus on
  - **social and economic inclusion** processes of international MRAs,
  - **integration policies** and **administrative systems**,
  - **demographic change**,
  - **impacts on/of rural areas.**

# Project overview

---

- **Consortium:**

- 17 project partners: research and civil society institutions/SEEs
- 11 involved European countries: Austria, Belgium, Estonia, Finland, Ireland, Italy, the Netherlands, Slovenia, Slovakia, Spain, and Turkey

- **Duration:**

- January 2024 – December 2027
- 48 months

- **Funding:**

- HORIZON Europe

# Project aims

- Produce evidence-based theoretical and practicable knowledge on how the **Social and Solidarity Economy (SSE)** can support **resilience, social inclusion, and good life** in European rural areas.
- **Recommendations** on framework conditions and **policy arrangements**
- **Specifically:**
  - Identify and analyse **drivers of social exclusion** and the challenges to **addressing disparities and marginalisation** associated with a) diverse types of **rural areas** (sparse, peri-urban, mountainous, coastal) and b) **people with various types of vulnerabilities**.
  - Explore the **role, capacity, and limitations of the Social and Solidarity Economy, and social enterprises in enhancing the inclusion of various vulnerable groups in rural areas** and in empowering them to maintain 'good life'.
  - **How policies and practices function and interact**; benchmarking selected policies/services/initiatives that promote SSE.
  - **Co-design and co-implement local pilots**, supporting people in a vulnerable situation, and **promoting their inclusion and full participation** in the communities.
  - **Co-creating and validating policy recommendations** on how to better meet the needs of people in a vulnerable situations.

# Work packages and objectives (I)

- **WP 1: Conceptual framework: enhancing social inclusion in rural areas via the social economy**
  - **Conceptual framework** that contributes to a more complete understanding of the **potentials of the social economy for enhancing social inclusion in rural areas** and supports planning and conducting of empirical research in SERIGO;
  - Elaborate **drivers and perceptions of vulnerability and social exclusion**;
  - Review the various definitions of the ‘social and solidarity economy’ (SSE);
  - Identify the ways through which **social innovative arrangements may promote ‘community’, social inclusion, resilience and sustainability**, with a special regard to different rural and vulnerability contexts;
  - Vulnerabilities/capabilities; social ex-/inclusion; sustainability & resilience in rural contexts; SSE solutions to achieve a ‘good life’
- **WP 2: Cohesion, synergy and synthesis**
  - **Mapping the empirical and policy ‘landscape’** (vulnerable and excluded groups and their needs in rural areas; existing social innovation approaches/initiatives/solutions); **mapping social innovations/SSE solutions/policies**
  - **Analysing multi-level European policies fostering the inclusion of people in vulnerable situations in rural areas**; mapping the **European landscape of rural vulnerabilities**
  - Operationalizing cross-cutting analytical dimensions and **research questions**.

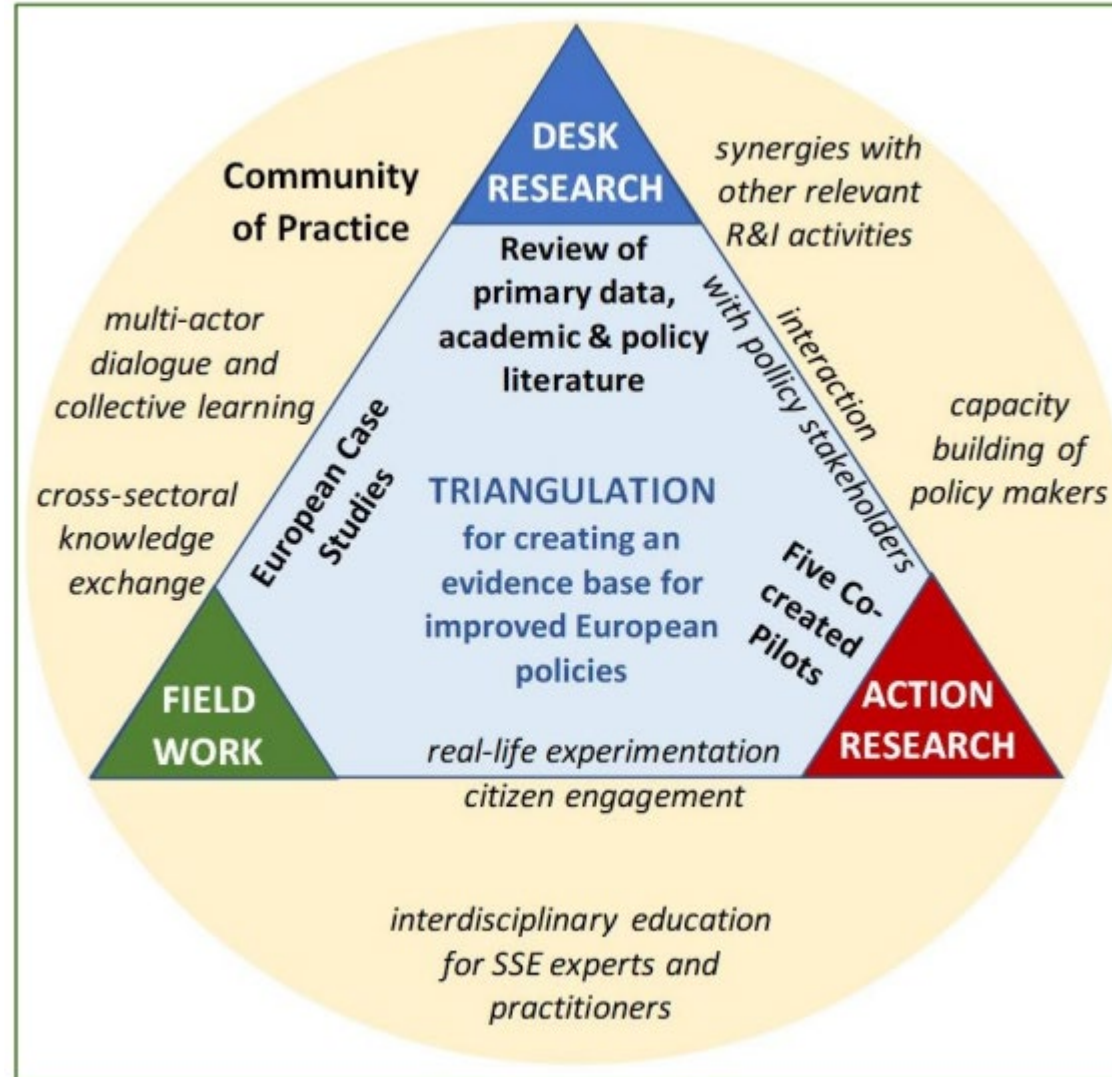
# Work packages and objectives (II)

- **WP 3: Case studies: taking stock of existing social innovation and SSE policies, services and actions in relation to social inclusion in rural areas**
  - Collect and analyse **empirical evidence from a minimum of 22 selected case studies**;
  - Case studies will investigate **framework conditions leading to social exclusion, drivers and potential of the SSE and social entrepreneurship in improving vulnerable groups' situation**.
  - Identify patterns around vulnerability, rurality and governance gaps and providing a basis for EU policy recommendation.
  
- **WP 4: Co-created pilot actions: learning, empowering and improving by doing (coordinator: CUAS)**
  - **Action research**: to explore and increase understanding of **social exclusion/inclusion processes**; contribute to know-how on stakeholder engagement, co-creation and communities' self-organization;
  - **Co-creation and implementation of pilot actions**:
    - 1) inclusion and empowerment of **women in rural areas** in Eastern Finland (FI)
    - 2) inclusion and empowerment **refugee women** in particular in rural Carinthia (AT)
    - 3) inclusion and empowerment of **Roma people** in Slovakia (SK)
    - 4) needs of specific groups within the **elderly** in Estonia (EE)
    - 5) needs/capacity assessment of e.g. **unemployed, youth and elderly** in Slovenia (SI)
  - Gain knowledge about vulnerable people's life situations, people's perception of their 'supposed' vulnerabilities; explore their capabilities for self-empowerment and co-creation; investigate the possibilities and limitations of social enterprises for social inclusion.
  - **Participatory co-creation toolkit for practitioners'**

# Work packages and objectives (III)

- **WP 5: Community of Practice, communication, dissemination and impact**
  - Framework for communication, dissemination and exploitation activities in the project
- **WP 6: Improved EU policies and upscaling frameworks: for social inclusion and via social economy in rural areas**
  - Provide policy makers and managers of EU funds with tailored **recommendations to enhance EU policy frameworks**, with a special regard to upscaling;
  - **Develop policy tools and guidelines** to support policy makers in the design of **policy frameworks for the social economy in rural area**;
  - Build the capacities to enhance the **social economy in rural areas as a key driver for the inclusion of vulnerable groups**.
- **WP 7: Project management and coordination**

# SERIGO's triangulation methodology





# Information & contact

**Dr. Marika Gruber**

[m.gruber@fh-kaernten.at](mailto:m.gruber@fh-kaernten.at)

+43(0)5/90500-2439

